

∞ Mr. Eight
Development

INTERSTELLAR TOWER



PROJECT CATALOGUE

Roadmap

| | |
|---------------------------------|-------|
| INTERSTELLAR INTRODUCTION | 1-6 |
| EDUCATION JVT | 8 |
| GENERAL INFORMATION | 10-13 |
| AMENITIES | 14-44 |
| SUITE COLLECTION | 46 |
| SIZING DETAILS | 47-63 |
| PLANS & BROCHURE | 64 |
| ABOUT MR EIGHT COLLECTION | 65 |

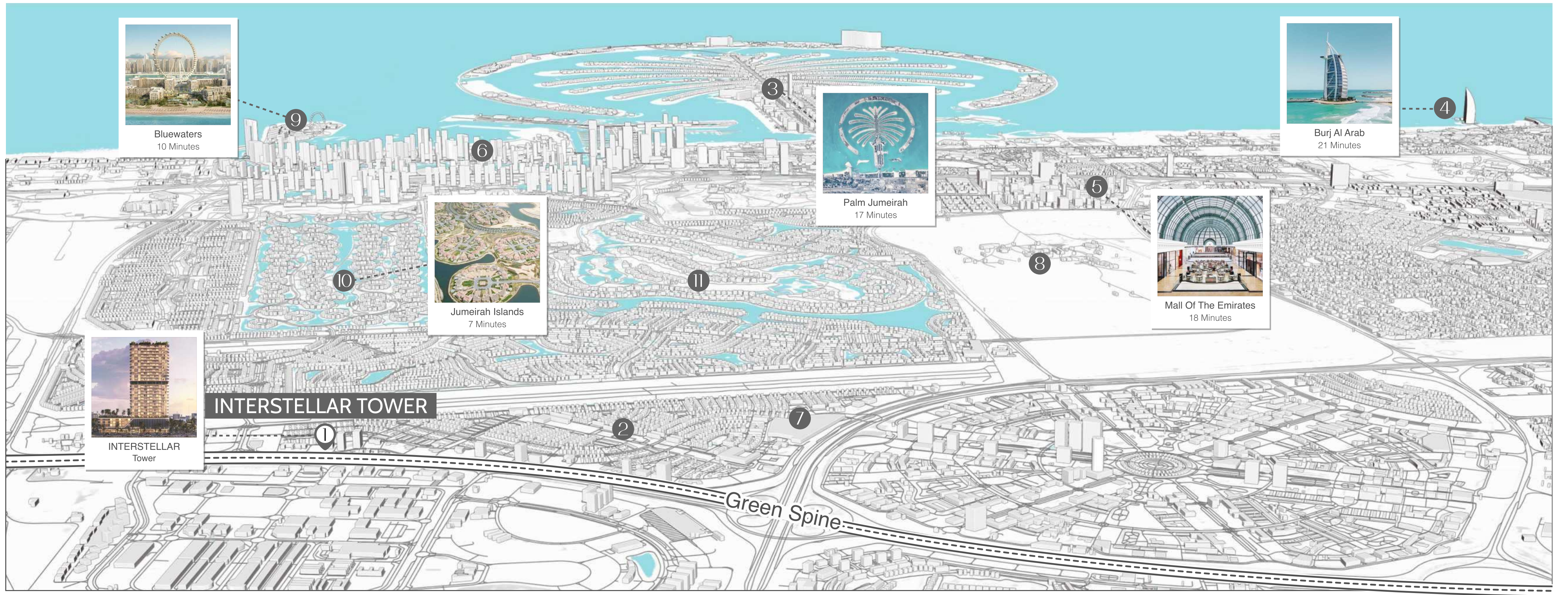


A white sailboat with a large white sail is sailing on a calm body of water. The sky is a mix of blue and orange, suggesting a sunset or sunrise. The water is still, reflecting the colors of the sky. The sailboat is positioned on the left side of the frame, moving towards the right.

It's a Place Where You Can Release
all Earthly Burdens and Revel in Freedom

Interstellar Tower

Mr. Eight



Just Moments Away From Dubai's Best Attractions

- | | | | | | |
|-----------------------------|-------------------------|--------------------------------|------------------------------------|------------------------------------|--|
| INTERSTELLAR Tower ① | Al Khail Avenue Mall ⑦ | 4 Minutes Sunmarke School ④ | 14 Minutes Montgomerie Golf Club ⑩ | 18 Minutes Jumeriah Golf Club ⑥ | 21 Minutes Burj Al Arab ② |
| Jumeirah Village Triangle ② | Jebel Ali Race Course ⑧ | 5 Minutes Arcadia School ⑤ | 16 Minutes Circle Mall ⑪ | 19 Minutes Dubai Hills Mall ⑦ | 25 Minutes Jumeirah Beach ③ |
| Palm Jumeirah ③ | Bluewaters ⑨ | 10 Minutes Bluewaters Island ⑥ | 17 Minutes Palm Jumeriah ⑫ | 19 Minutes Topgolf Dubai ⑧ | 25 Minutes Burj Khalifa ④ |
| Burj Al Arab ④ | Jumeirah Islands ⑩ | 13 Minutes Dubai Marina ⑦ | 18 Minutes Mall Of The Emirates ⑩ | 22 Minutes Dubai Hills Golf Club ⑨ | 30 Minutes Dubai International Airport ⑤ |
| Vcv ⑤ | Emirates Hills ⑪ | | | | |
| Dubai Marina ⑥ | Dubai Green Spine ⑫ | | | | |

Jumeirah Village Triangle

MAP

- 1 INTERSTELLAR TOWER
- 2 COMMUNITY PARKS
- 3 JVT WATER FOUNTAIN
- 4 ARCADIA SCHOOL
- 5 JVT POND
- 6 SOCCER FIELD
- 7 BASKETBALL COURTS
- 8 BASKETBALL PITCH

- 9 TENNIS COURTS
- 10 SUNMARKE SCHOOL
- 11 SUPERMARKET
- 12 AL KHAIL AVENUE MALL
- 13 DOG PARK



INTERSTELLAR
TOWER

Dubai Green Spine



Family Tower

— HOME —



INTERSTELLAR Tower offers 2- and 3-bedroom apartments with a kindergarten, coworking space, parks, pools, and a space observatory for modern living.

 2 BEDROOM

 3 BEDROOM

Teaser Interstellar Tower

— VIDEO —

Check out our new video on YouTube about the family-oriented Interstellar project in Jumeirah Village Triangle (JVT). Explore spacious 2- and 3-bedroom apartments, premium amenities, and stunning skyline views—designed for families seeking comfort and convenience in Dubai. The video is now available on YouTube.

www.youtube.com/watch?feature=shared&v=JYGjmSbY2D8



Education

JUMEIRAH VILLAGE TRIANGLE

Interstellar Tower is ideally located in Dubai's Jumeirah Village Triangle neighborhood, just minutes from the respected British Arcadia and Sunmarke Schools. This location offers families convenient access to quality education in a vibrant, well-connected community.



Arcadia School



Sunmarke School



64 KM

Total Length Of
Entire Project.

20 MIN

Supports Dubai's 20 -
Minute City Initiative.

130K

Powers Approx
130,000 Homes.

1 MIL

Features Over
1 Million Trees.

100%

Trams Powered Entirely
By Solar Energy.

Dubai Green Spine

— WORLD'S GREENEST HIGHWAY —



General Information

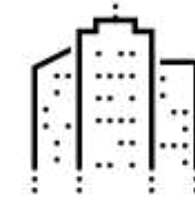
ABOUT THE PROJECT



PAYMENT PLAN
40/60



COMPLETION DATE
Q1 / 2027



AMENITIES

Green Amenities offers 20,000 sq ft (2,000 m²) of private space over 29 floors, with pools, an artificial river, a park, a rooftop cinema, and a space observatory.



2 BEDROOM APARTMENTS
From 96 m² to 128m²
From 1035 ft² to 1378 ft²



POOL

Each apartment features a private pool on the balcony.



3 BEDROOM APARTMENTS
From 143 m² to 143m²
From 1524 ft² to 1544 ft²



PARKING

Each two-bedroom apartment includes one free parking space, and three-bedroom apartments come with two. Extra parking spaces are available.



SERVICE CHARGE
AED 18 per sr.ft



Starting Price

INFORMATION



PAYMENT PLAN
40/60



2 BEDROOM FROM
AED 1,5 million / USD 408 000
Including one parking space



3 BEDROOM FROM
AED 2,2 million / USD 600 000
Including two parking space



PARKING PRICE
70 000 AED / USD 20 000



COMPLETION DATE
1quater, 2027

This apartment is offered for sale with built - in furniture, spacious wardrobes, and a kitchen equipped with high - quality German appliances. The bathrooms come fully fitted with essential fixtures, ensuring a move - in ready living.

Interstellar Tower

— FRIENDLY TO PETS —

Building is pet-friendly, with dedicated green spaces for the comfort of both residents and their pets.



Interstellar Tower Services

OWNER BENEFITS



RESIDENCES CONCIERGE



SECURITY



RESIDENT'S FACILITIES STAFF



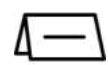
COMMON AREA MAINTENANCE



COMMON AREA HOUSE KEEPING



COMMON AREA UTILITIES



COMMON AREA "RESERVE FOR REPLACEMENT"



WI-FI INTERNET IN RESIDENTS FACILITIES



GENERAL & ADMINISTRATIVE



MAID'S SERVICES





RESIDENT CONCIERGE SERVICE

———— INTERSTELLAR ————

Staff member is available to assist residents in carrying their purchases directly to their apartments, providing added convenience and support.

Interstellar Pool

— WEIGHTLESSNESS & SERENITY —



Our pool is a true oasis. Swim in it while looking up at the sky and feel your problems dissolve in the water.



The Park's Green Zone

The park's green zone has a river and walking paths, perfect for family time and relaxation.



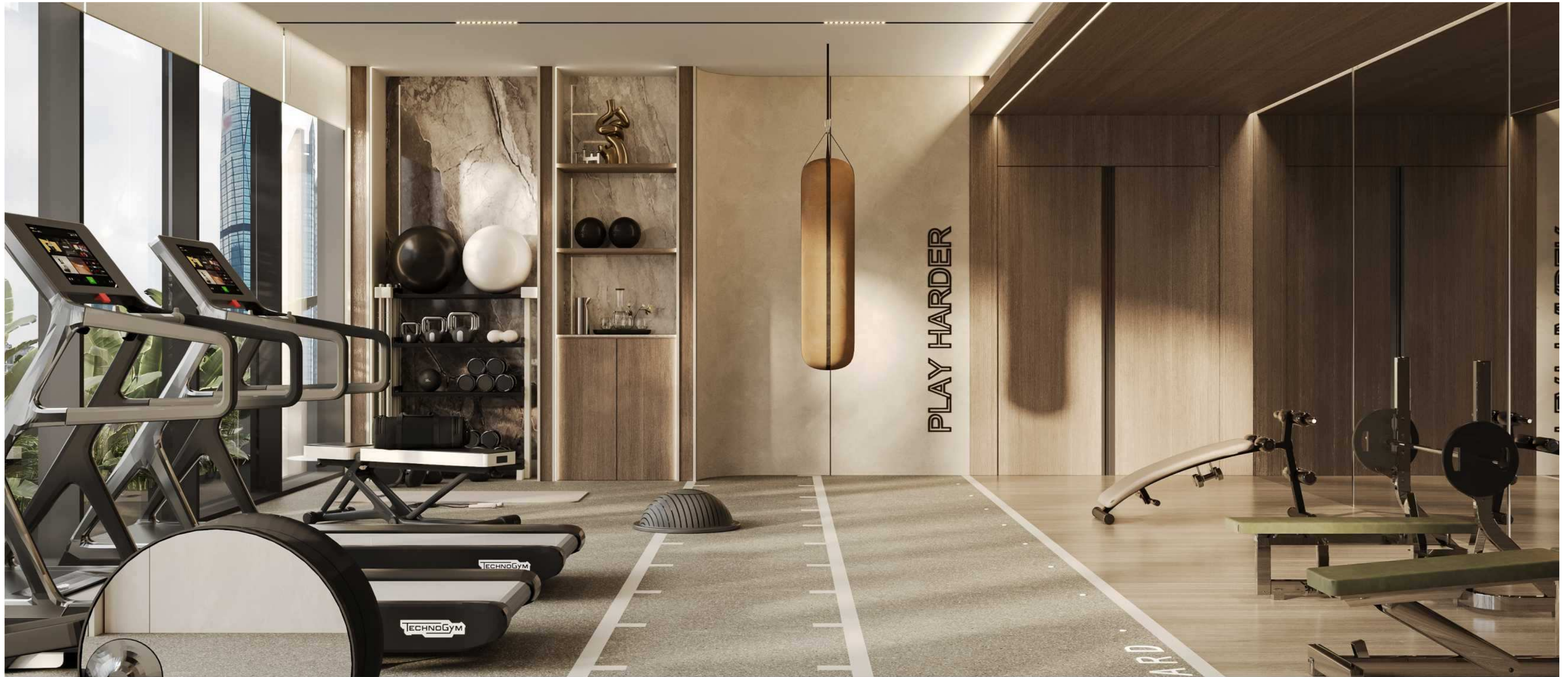


Let Kids Dream

PLAYGROUND

The designer children's playground inspires imagination and growth, offering a creative space for kids to dream and develop through play.





Interstellar GYM

BY TECHNOGYM



Sport is more than just physical activity. It's an investment in your health, mental vitality, and overall harmony. At the INTERSTELLAR Sports Complex, you can become stronger, recharge your life energy, and maintain harmony with the world.



INTERSTELLAR VALET PARKING

———— SERVICE ————

Provides secure, 24/7 valet service for residents and guests. Available for an additional fee.



Caffe

INTERSTELLAR
Tower

Coworking



Interstellar Hall

———— CO-WORKING ————

Our thoughtfully designed lobby offers a blend of sophistication and comfort, perfect for both relaxation and casual meetings.



Lobby & Co-Working Space

INTERSTELLAR HALL







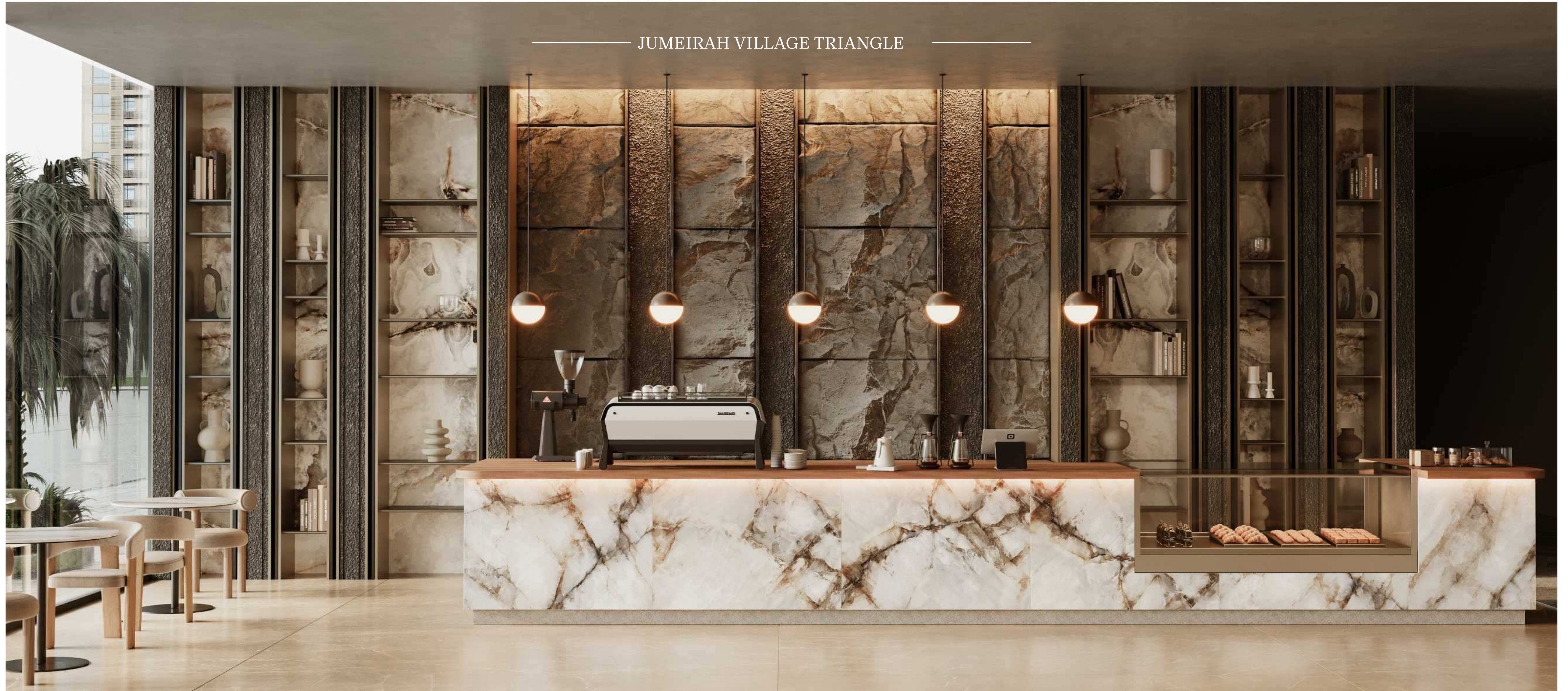
Interstellar Lobby

———— HALL ————

The Interstellar lobby combines style and comfort, offering a versatile space for meetings, socializing with friends, or playing board games in a modern co-working area.

Interstellar Cafe

JUMEIRAH VILLAGE TRIANGLE

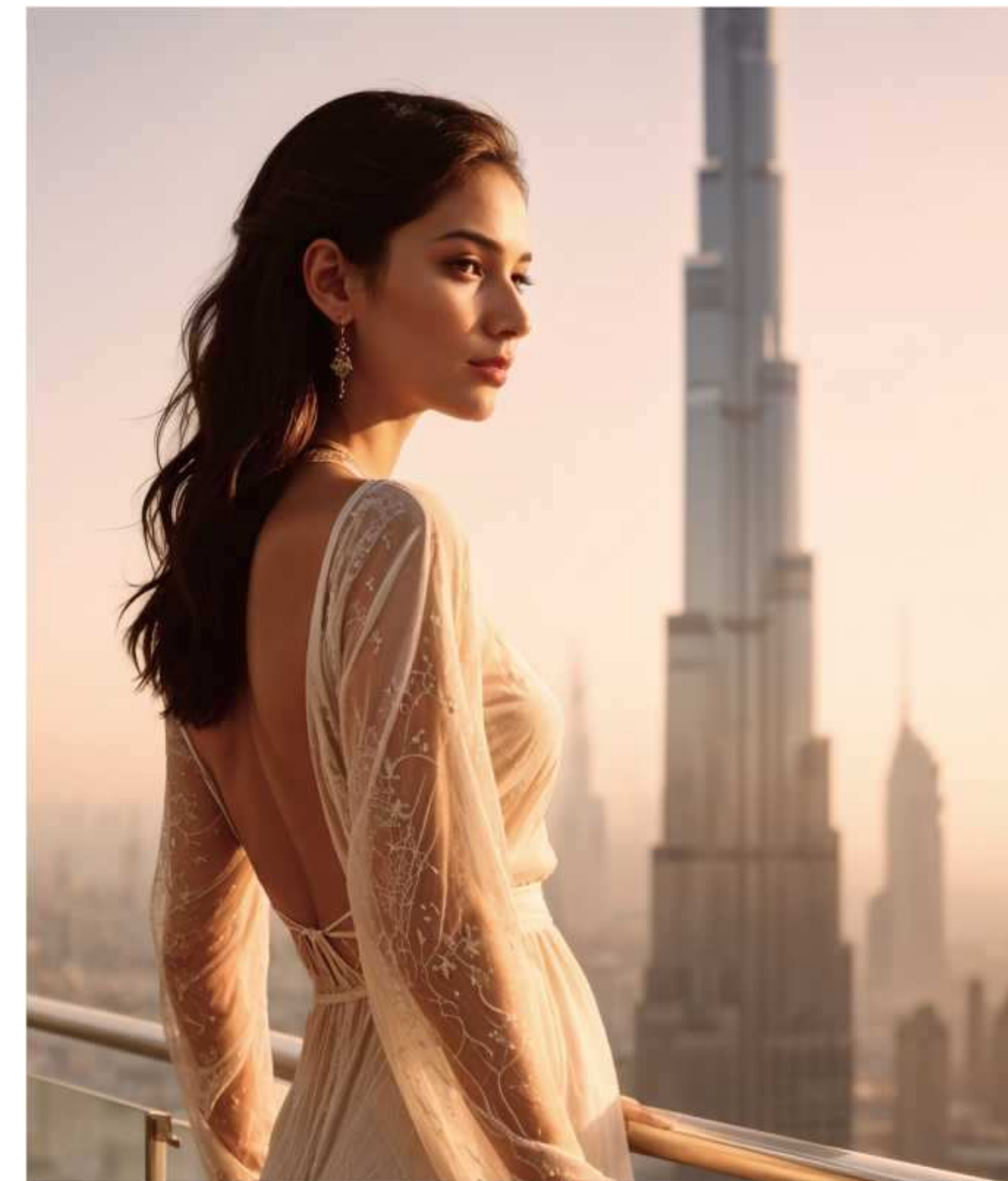


The bright and cozy cafe will welcome you with exquisite cuisine and fill you with inspiration.



12th Floor

———— 360 DEGREE VIEW ————



The 12th floor features a spacious terrace with a stunning 360-degree panoramic view. Designed for residents, it offers comfortable sofas for relaxation and designated areas for yoga and meditation, providing a serene space for wellness and relaxation.

Roof Garden

SPACE OBSERVATORY

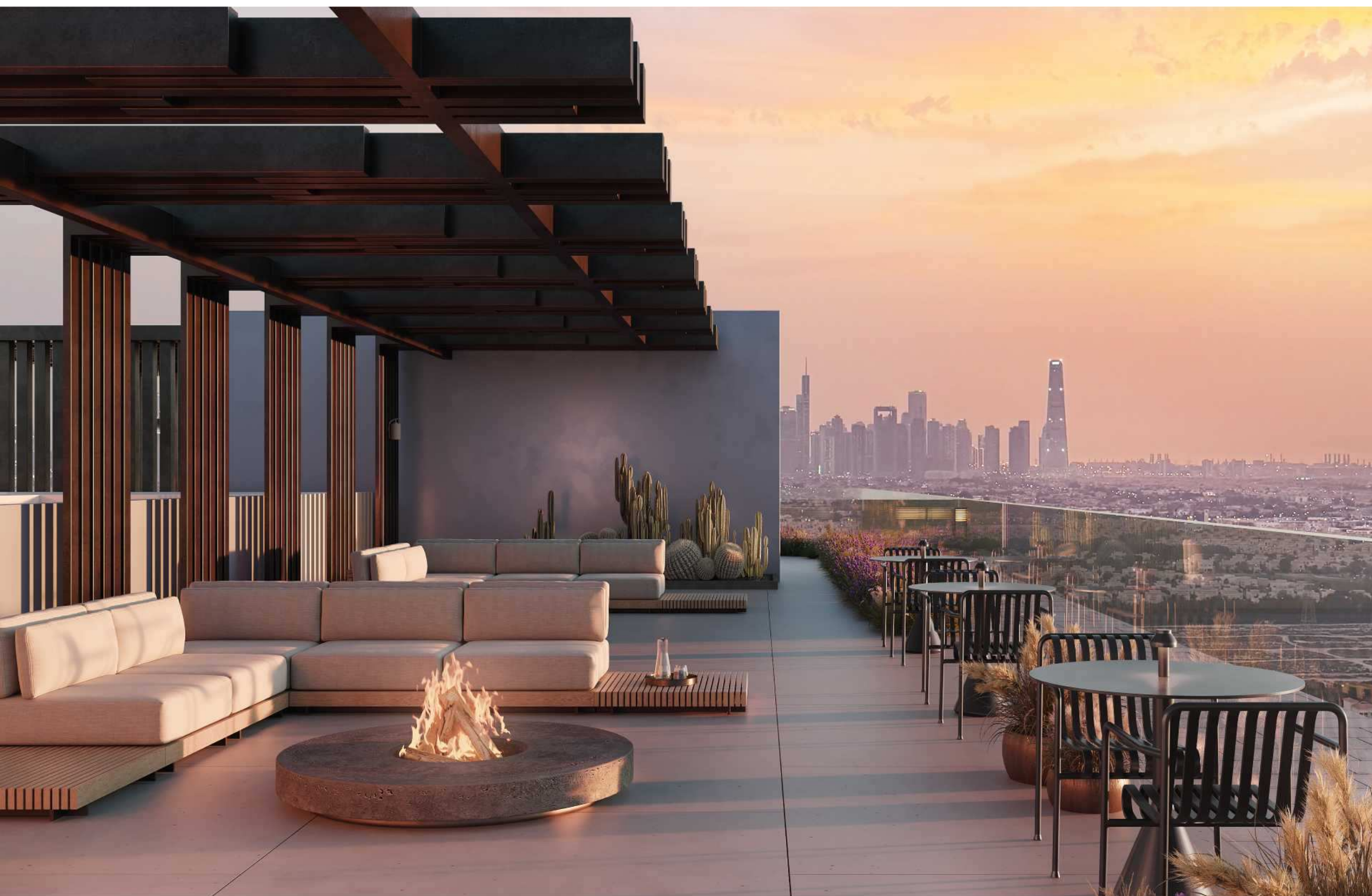
&

OUTDOOR CINEMA



There is a rooftop garden, a recreation area and an open-air movie theater. It is a great place for single and family leisure activities. Meet sunrises and sunsets by filling your life with colorful and positive experiences.





Roof Garden

— SKYLINE SUNSET —



The rooftop features a cozy chill-out zone with sofas and a fire pit, offering the perfect spot to relax and enjoy the sunset.

Bluewaters & Marina Skyline View



Suite Collection

— GET INTRODUCED —





Master Bedroom

— SENSE OF COMFORT —



Each apartment is offered for sale with built-in furniture, spacious wardrobes, and a kitchen equipped with high-quality German appliances. The bathrooms come fully fitted with essential fixtures, ensuring a move-in ready living space.







Live With Nature

———— PANORAMIC VIEW ————

Floor-to-ceiling panoramic windows allow the space to be filled with natural light.









Kitchen

— LIVING ROOM —

SIEMENS

 **Electrolux**

Each kitchen is equipped with German appliances and features a multifunctional stone countertop with built-in equipment for added convenience and style.



Bathroom

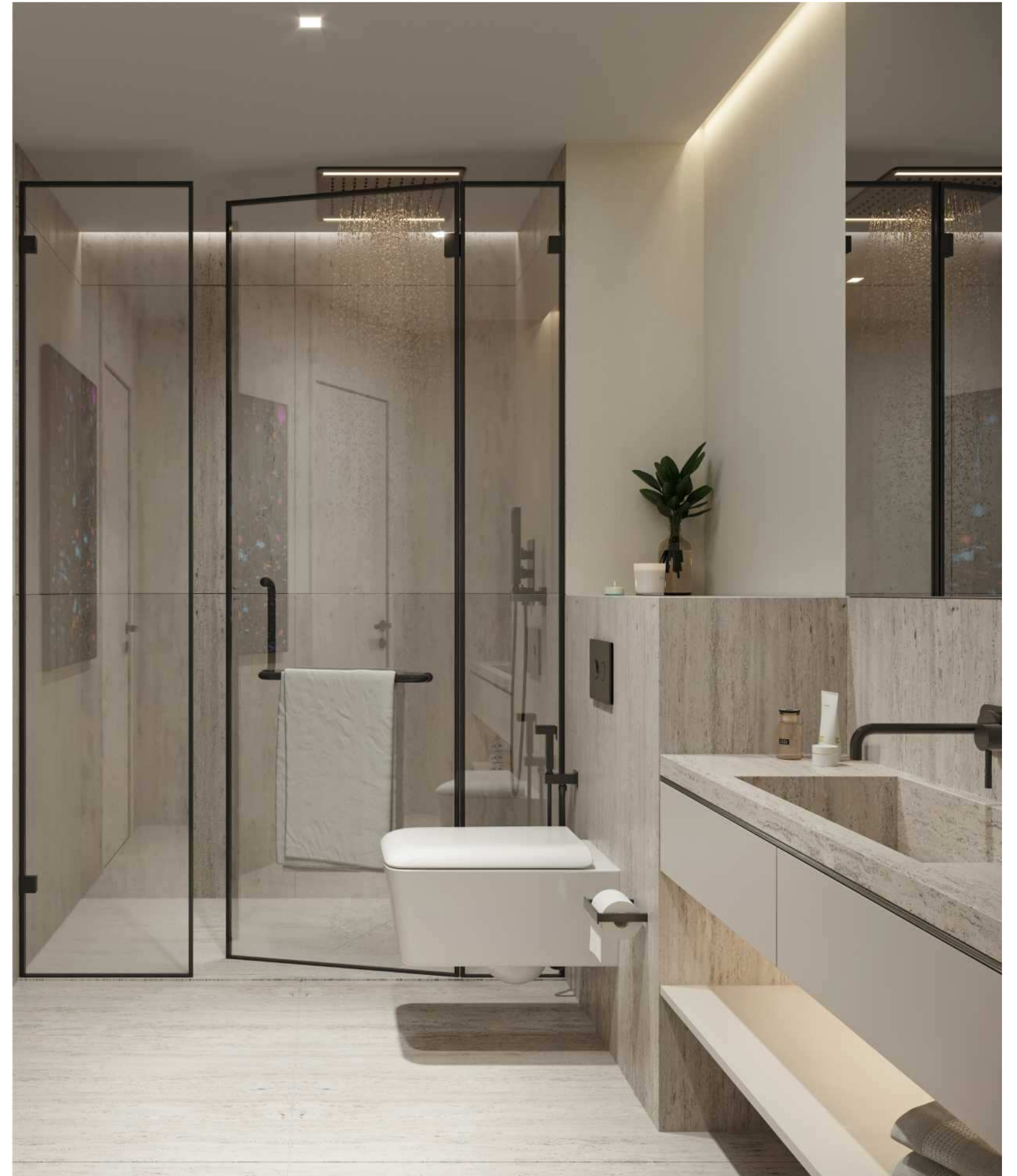
MINIMALISM


Villeroy & Boch
1748


GROHE

The bathroom is designed in light tones, creating a calm and spacious atmosphere. Outfitted with premium Grohe fixtures, it combines elegance and functionality. High-quality materials are used, featuring a refined imitation of Tarvintin Stone, blending modernity with timeless appeal.





Hallways

— SOUNDRESISTANT DOORS —

Special attention was given to the doors. They are wide, tall, and soundproof, ensuring residents can fully enjoy comfort and peace within their apartments.

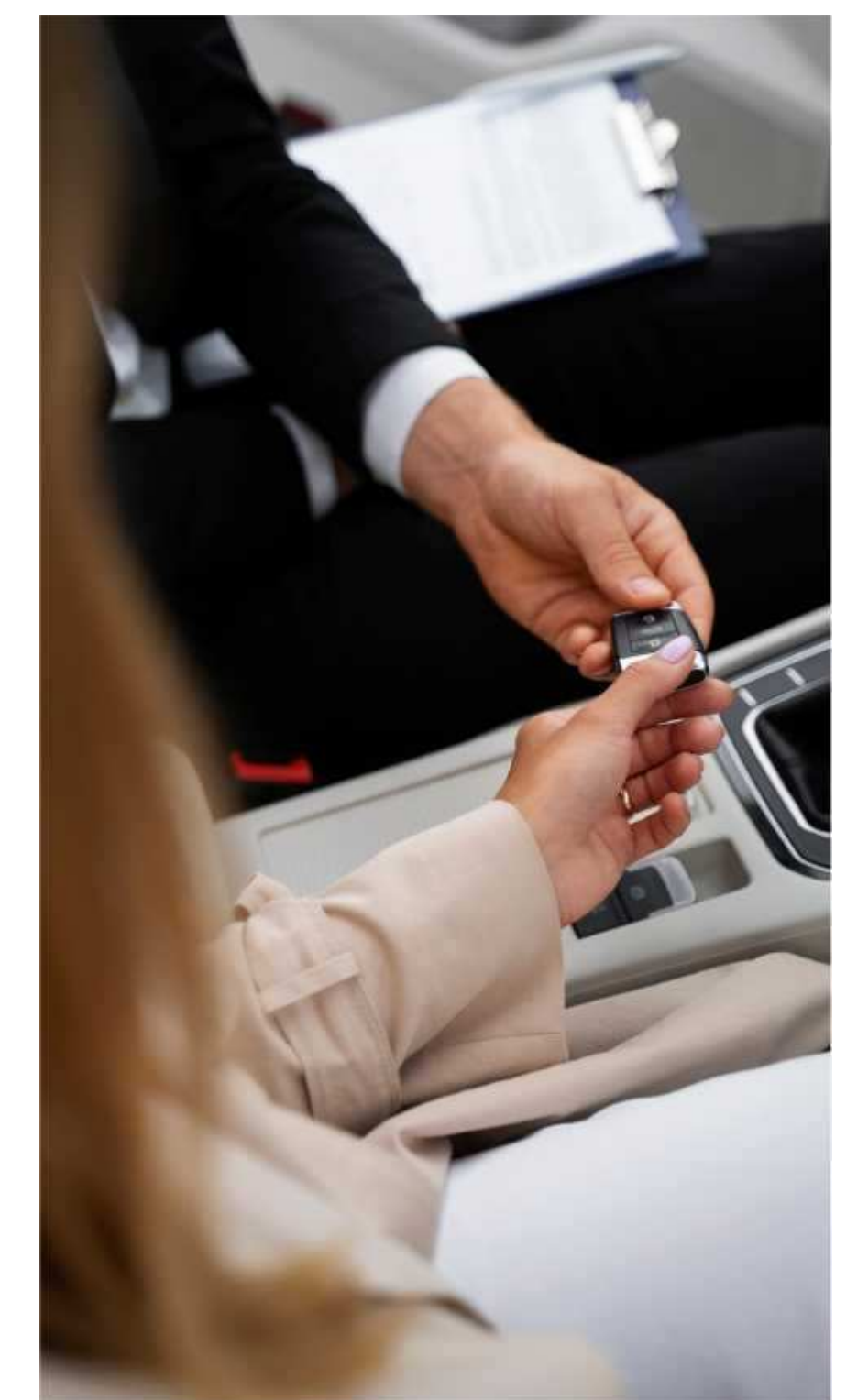




PARKING

— UNDERGROUND —

Extra parking slots available.



Suits Collection

— INTERSTELLAR —

TOWER

Suite 01

PROPERTY DETAILS & SIZING DETAILS

∞ Mr. Eight
Development

| | |
|------------------|----------------------|
| PROJECT TYPE: | Residential |
| UNIT TYPE: | 2 Bedroom |
| NR. OF PARKING: | 1 |
| POOL IN TERRACE: | Yes |
| SUITE AREA: | 833 sq.ft / 77 sq.m |
| BALCONY AREA: | 237 sq.ft / 22 sq.m |
| TOTAL AREA: | 1070 sq.ft / 99 sq.m |
| FURNISHED: | |

This apartment is offered for sale with built - in furniture, spacious wardrobes, and a kitchen equipped with high - quality German appliances. The bathrooms come fully fitted with essential fixtures, ensuring a move - in ready living space.

BURJ HALIFA



Suite 02

BURJ HALIFA

PROPERTY DETAILS

&

SIZING DETAILS

∞ Mr. Eight
Development

PROJECT TYPE: Residential

UNIT TYPE: 2 Bedroom

NR. OF PARKING: 1

POOL IN TERRACE: Yes

SUITE AREA: 918 sq.ft / 85 sq.m

BALCONY AREA: 237 sq.ft / 22 sq.m

TOTAL AREA: 1155 sq.ft / 107 sq.m

FURNISHED:

This apartment is offered for sale with built - in furniture, spacious wardrobes, and a kitchen equipped with high - quality German appliances. The bathrooms come fully fitted with essential fixtures, ensuring a move - in ready living space.



Suite 03

PROPERTY DETAILS

&

SIZING DETAILS

∞ Mr. Eight
Development

PROJECT TYPE: Residential

UNIT TYPE: 2 Bedroom

NR. OF PARKING: 1

POOL IN TERRACE: Yes

SUITE AREA: 821 sq.ft / 76 sq.m

BALCONY AREA: 214 sq.ft / 20 sq.m

TOTAL AREA: 1035 sq.ft / 96 sq.m

FURNISHED:

This apartment is offered for sale with built - in furniture, spacious wardrobes, and a kitchen equipped with high - quality German appliances. The bathrooms come fully fitted with essential fixtures, ensuring a move - in ready living space.

BURJ HALIFA



Suite 04

PROPERTY DETAILS & SIZING DETAILS

∞ Mr. Eight
Development

| | |
|------------------|-----------------------|
| PROJECT TYPE: | Residential |
| UNIT TYPE: | 2 Bedroom |
| NR. OF PARKING: | 1 |
| POOL IN TERRACE: | Yes |
| SUITE AREA: | 822 sq.ft / 76 sq.m |
| BALCONY AREA: | 416 sq.ft / 39 sq.m |
| TOTAL AREA: | 1238 sq.ft / 115 sq.m |
| FURNISHED: | |

This apartment is offered for sale with built - in furniture, spacious wardrobes, and a kitchen equipped with high - quality German appliances. The bathrooms come fully fitted with essential fixtures, ensuring a move - in ready living space.

JUMEIRAH GOLF & COUNTRY CLUB



THE PALM JEBEL ALI

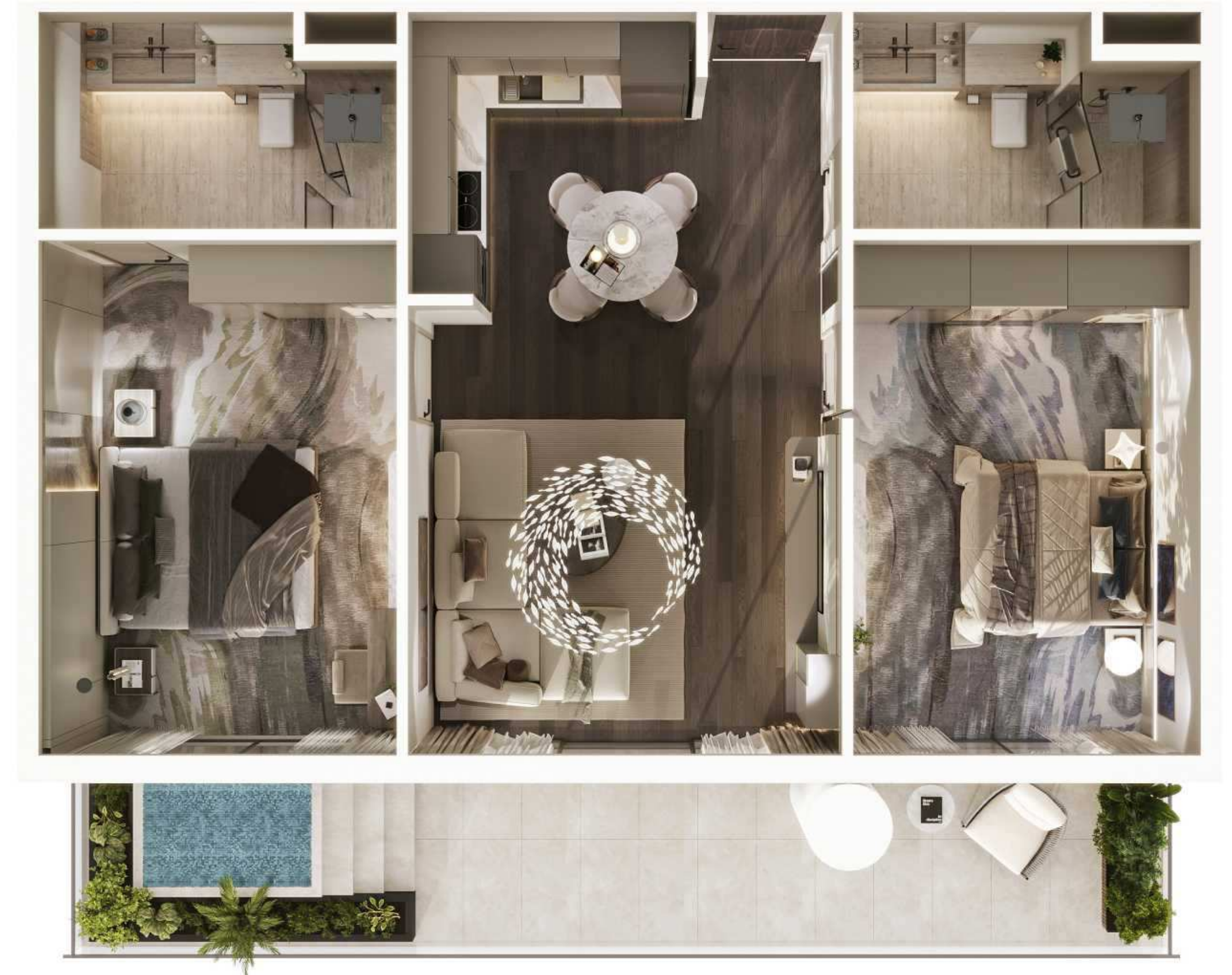
Suite 05

PROPERTY DETAILS & SIZING DETAILS

∞ Mr. Eight
Development

| | |
|------------------|----------------------|
| PROJECT TYPE: | Residential |
| UNIT TYPE: | 2 Bedroom |
| NR. OF PARKING: | 1 |
| POOL IN TERRACE: | Yes |
| SUITE AREA: | 825 sq.ft / 76 sq.m |
| BALCONY AREA: | 234 sq.ft / 22 sq.m |
| TOTAL AREA: | 1059 sq.ft / 99 sq.m |
| FURNISHED: | |

This apartment is offered for sale with built - in furniture, spacious wardrobes, and a kitchen equipped with high - quality German appliances. The bathrooms come fully fitted with essential fixtures, ensuring a move - in ready living space.



THE PALM JEBEL ALI

Suite 06

PROPERTY DETAILS & SIZING DETAILS

∞ Mr. Eight
Development

| | |
|------------------|-----------------------|
| PROJECT TYPE: | Residential |
| UNIT TYPE: | 2 Bedroom |
| NR. OF PARKING: | 1 |
| POOL IN TERRACE: | Yes |
| SUITE AREA: | 822 sq.ft / 76 sq.m |
| BALCONY AREA: | 416 sq.ft / 39 sq.m |
| TOTAL AREA: | 1239 sq.ft / 115 sq.m |
| FURNISHED: | |

This apartment is offered for sale with built - in furniture, spacious wardrobes, and a kitchen equipped with high - quality German appliances. The bathrooms come fully fitted with essential fixtures, ensuring a move - in ready living space.



THE PALM JEBEL ALI

Suite 07

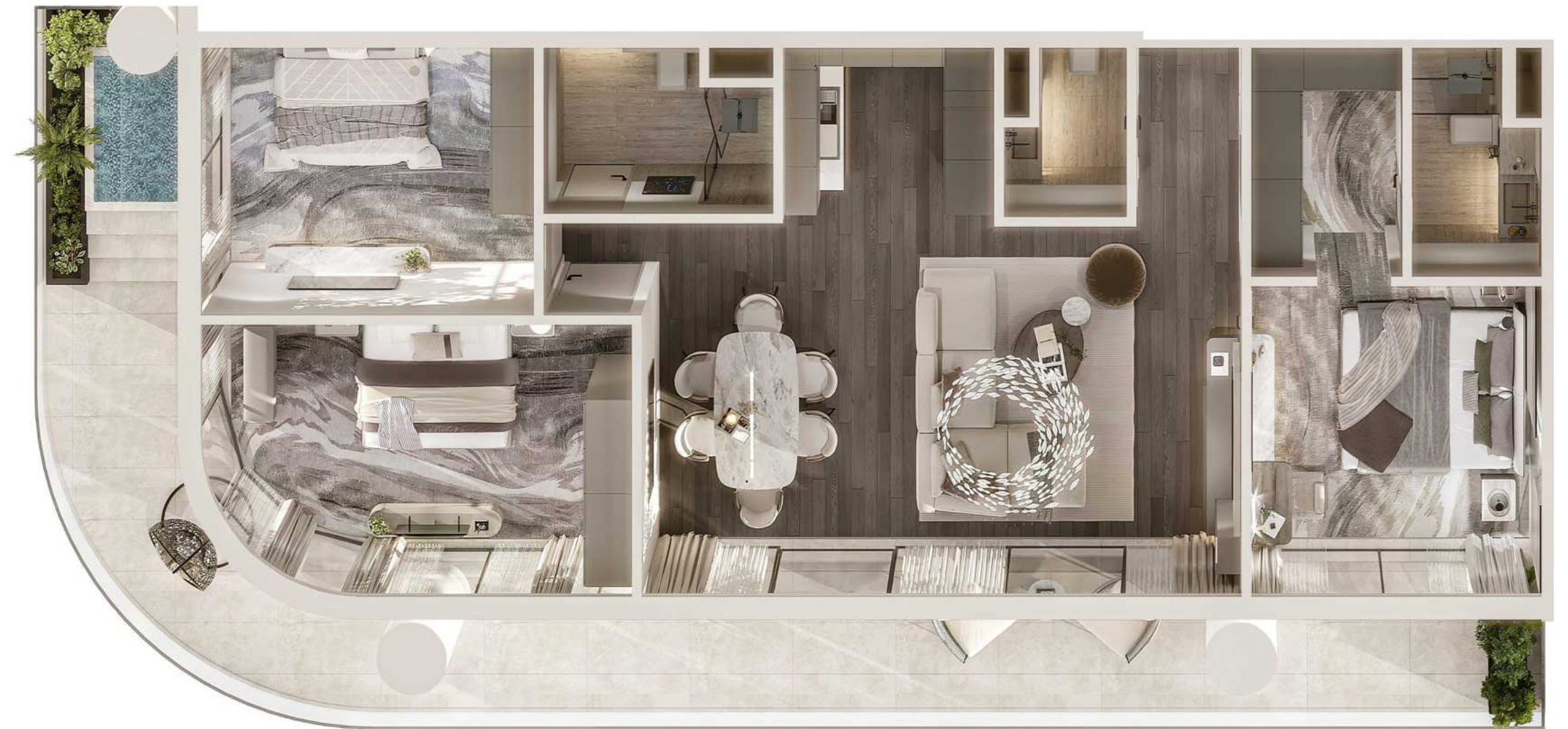
PROPERTY DETAILS & SIZING DETAILS

∞ Mr. Eight
Development

| | |
|------------------|-----------------------|
| PROJECT TYPE: | Residential |
| UNIT TYPE: | 3 Bedroom |
| NR. OF PARKING: | 2 |
| POOL IN TERRACE: | Yes |
| SUITE AREA: | 1057 sq.ft / 98 sq.m |
| BALCONY AREA: | 487 sq.ft / 45 sq.m |
| TOTAL AREA: | 1544 sq.ft / 143 sq.m |
| FURNISHED: | |

This apartment is offered for sale with built - in furniture, spacious wardrobes, and a kitchen equipped with high - quality German appliances. The bathrooms come fully fitted with essential fixtures, ensuring a move - in ready living space.

BURJ HALIFA



BLUE WATERS

Suite 08

PROPERTY DETAILS

&

SIZING DETAILS

∞ Mr. Eight
Development

PROJECT TYPE: Residential

UNIT TYPE: 2 Bedroom

NR. OF PARKING: 1

POOL IN TERRACE: Yes

SUITE AREA: 825 sq.ft / 77 sq.m

BALCONY AREA: 234 sq.ft / 22 sq.m

TOTAL AREA: 1059 sq.ft / 99 sq.m

FURNISHED:

This apartment is offered for sale with built - in furniture, spacious wardrobes, and a kitchen equipped with high - quality German appliances. The bathrooms come fully fitted with essential fixtures, ensuring a move - in ready living space.

AMENITIES GREEN AREA



Suite 09

PROPERTY DETAILS & SIZING DETAILS

∞ Mr. Eight
Development

| | |
|------------------|----------------------|
| PROJECT TYPE: | Residential |
| UNIT TYPE: | 2 Bedroom |
| NR. OF PARKING: | 1 |
| POOL IN TERRACE: | Yes |
| SUITE AREA: | 825 sq.ft / 77 sq.m |
| BALCONY AREA: | 234 sq.ft / 22 sq.m |
| TOTAL AREA: | 1059 sq.ft / 99 sq.m |
| FURNISHED: | |

This apartment is offered for sale with built - in furniture, spacious wardrobes, and a kitchen equipped with high - quality German appliances. The bathrooms come fully fitted with essential fixtures, ensuring a move - in ready living space.



JVT COMMUNITY

Suite 10

PROPERTY DETAILS & SIZING DETAILS

∞ Mr. Eight
Development

| | |
|------------------|----------------------|
| PROJECT TYPE: | Residential |
| UNIT TYPE: | 2 Bedroom |
| NR. OF PARKING: | 1 |
| POOL IN TERRACE: | Yes |
| SUITE AREA: | 834 sq.ft/ 78 sq.m |
| BALCONY AREA: | 416 sq.ft/ 39 sq.m |
| TOTAL AREA: | 1251 sq.ft/ 116 sq.m |
| FURNISHED: | |

This apartment is offered for sale with built - in furniture, spacious wardrobes, and a kitchen equipped with high - quality German appliances. The bathrooms come fully fitted with essential fixtures, ensuring a move - in ready living space.

JVT COMMUNITY



JVT COMMUNITY

Suite 11

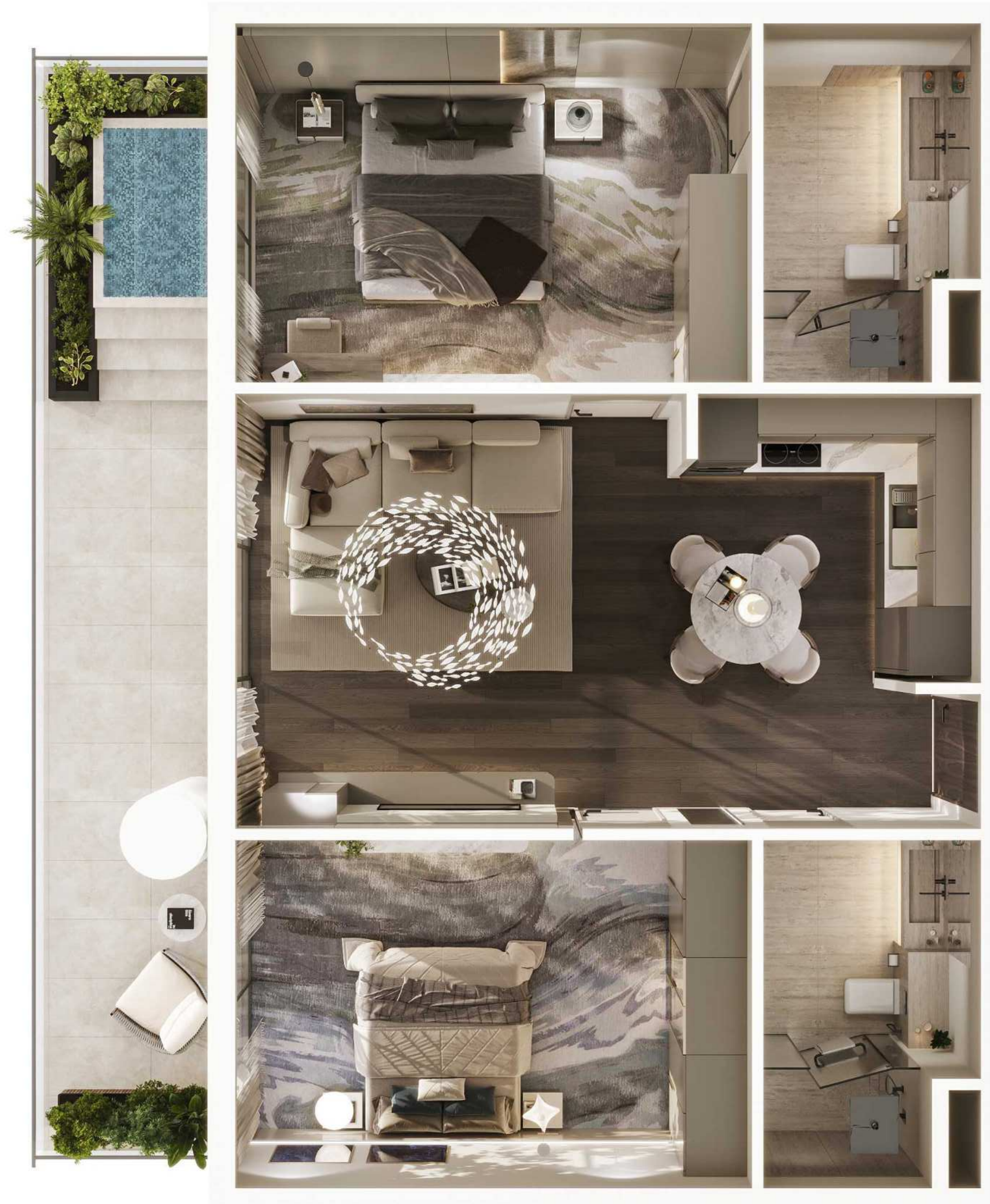
PROPERTY DETAILS & SIZING DETAILS

∞ Mr. Eight
Development

| | |
|------------------|----------------------|
| PROJECT TYPE: | Residential |
| UNIT TYPE: | 2 Bedroom |
| NR. OF PARKING: | 1 |
| POOL IN TERRACE: | Yes |
| SUITE AREA: | 825 sq.ft / 77 sq.m |
| BALCONY AREA: | 234 sq.ft / 22 sq.m |
| TOTAL AREA: | 1059 sq.ft / 98 sq.m |
| FURNISHED: | |

This apartment is offered for sale with built - in furniture, spacious wardrobes, and a kitchen equipped with high - quality German appliances. The bathrooms come fully fitted with essential fixtures, ensuring a move - in ready living space.

JVT COMMUNITY



Suite 12

PROPERTY DETAILS & SIZING DETAILS

∞ Mr. Eight
Development

PROJECT TYPE: Residential
UNIT TYPE: 2 Bedroom
NR. OF PARKING: 1
POOL IN TERRACE: Yes
SUITE AREA: 1126 sq.ft / 105 sq.m
BALCONY AREA: 185 sq.ft / 17 sq.m
TOTAL AREA: 1311 sq.ft / 122 sq.m
FURNISHED:

This apartment is offered for sale with built - in furniture, spacious wardrobes, and a kitchen equipped with high - quality German appliances. The bathrooms come fully fitted with essential fixtures, ensuring a move - in ready living space.

JVT COMMUNITY



Suite 13

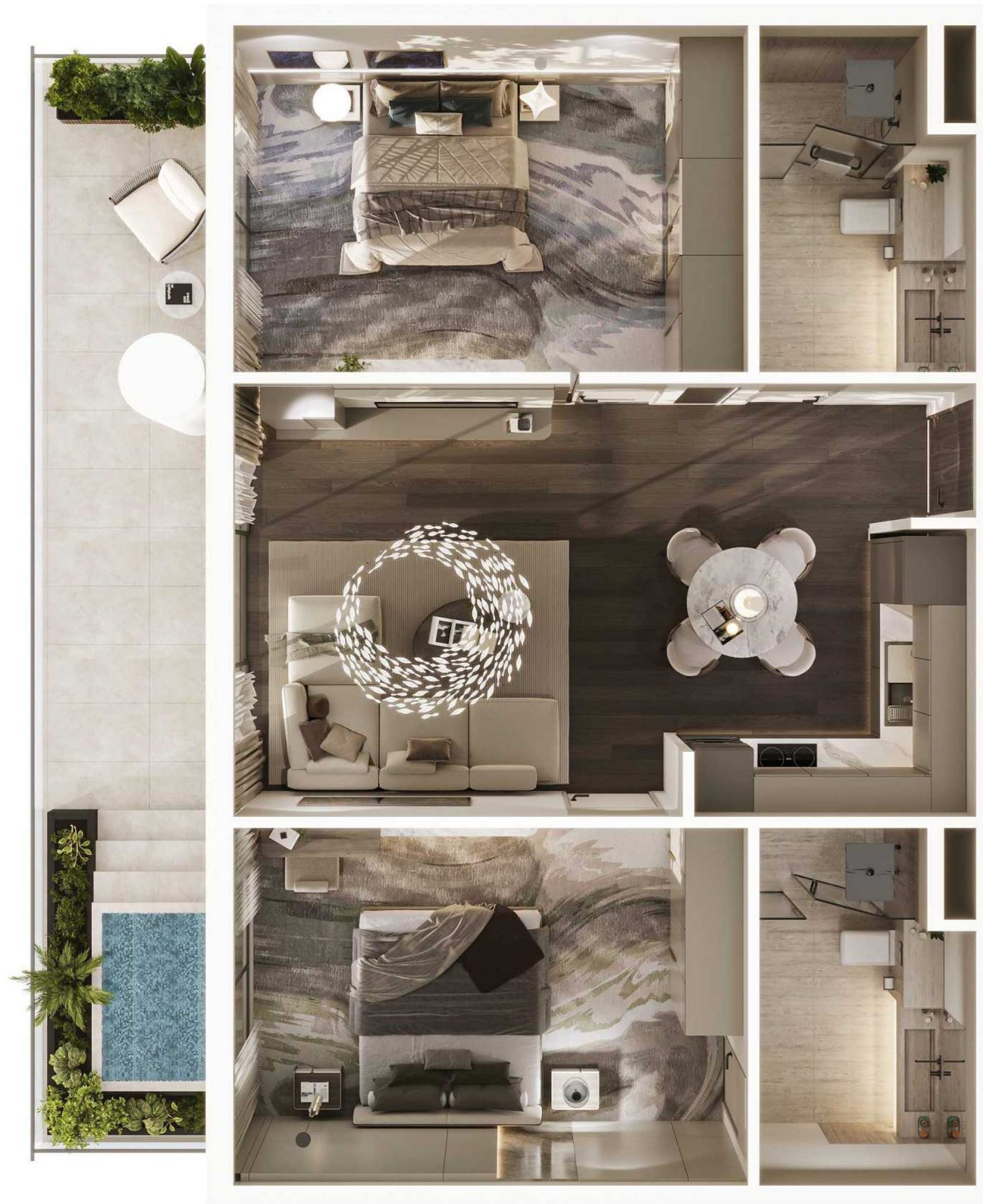
PROPERTY DETAILS & SIZING DETAILS

∞ Mr. Eight
Development

| | |
|------------------|----------------------|
| PROJECT TYPE: | Residential |
| UNIT TYPE: | 2 Bedroom |
| NR. OF PARKING: | 1 |
| POOL IN TERRACE: | Yes |
| SUITE AREA: | 825 sq.ft / 77 sq.m |
| BALCONY AREA: | 234 sq.ft / 22 sq.m |
| TOTAL AREA: | 1059 sq.ft / 99 sq.m |
| FURNISHED: | |

This apartment is offered for sale with built - in furniture, spacious wardrobes, and a kitchen equipped with high - quality German appliances. The bathrooms come fully fitted with essential fixtures, ensuring a move - in ready living space.

AMENITIES GREEN AREA



Suite 14

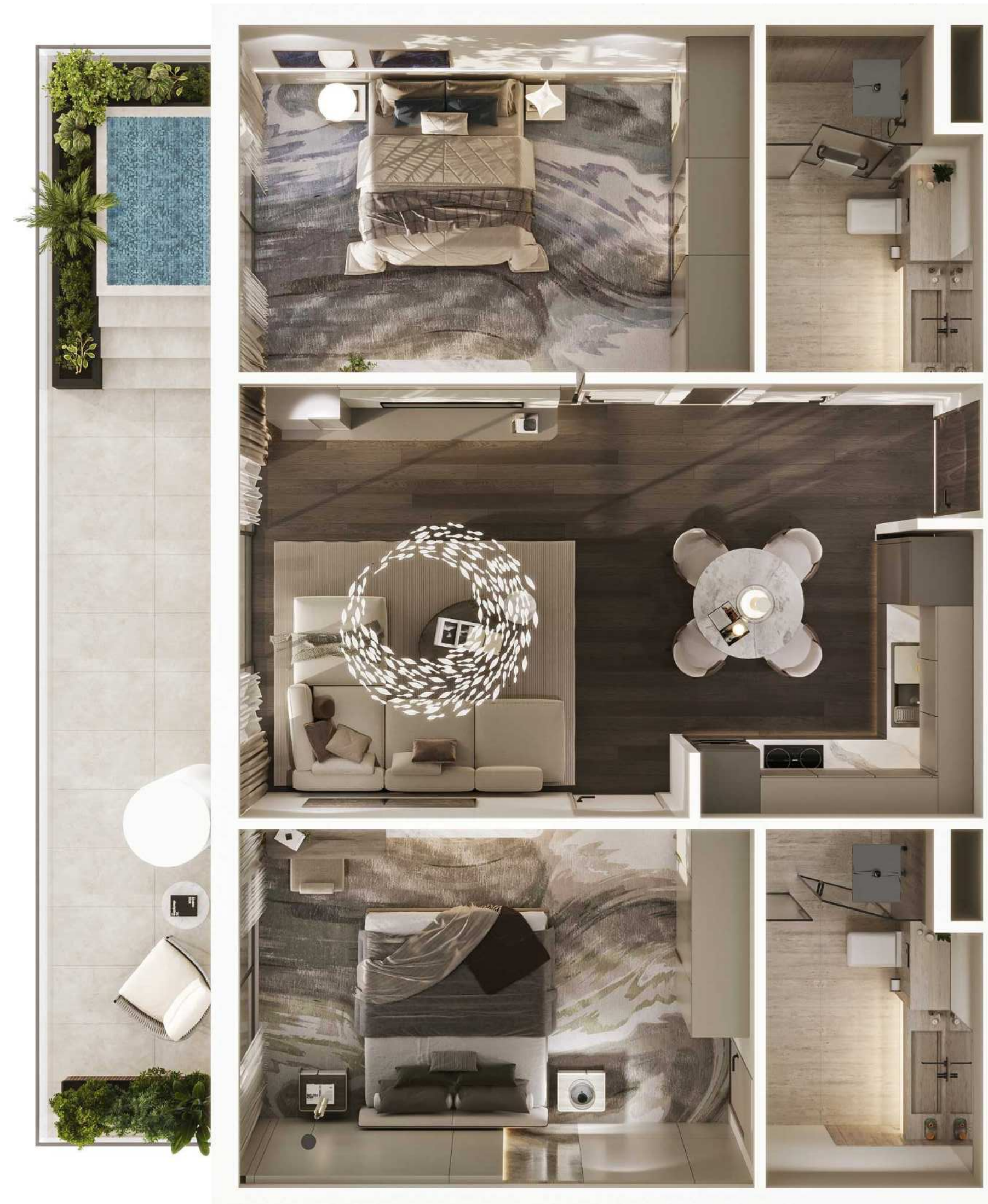
PROPERTY DETAILS & SIZING DETAILS

∞ Mr. Eight
Development

| | |
|------------------|----------------------|
| PROJECT TYPE: | Residential |
| UNIT TYPE: | 2 Bedroom |
| NR. OF PARKING: | 1 |
| POOL IN TERRACE: | Yes |
| SUITE AREA: | 825 sq.ft / 77 sq.m |
| BALCONY AREA: | 234 sq.ft / 22 sq.m |
| TOTAL AREA: | 1059 sq.ft / 99 sq.m |
| FURNISHED: | |

This apartment is offered for sale with built - in furniture, spacious wardrobes, and a kitchen equipped with high - quality German appliances. The bathrooms come fully fitted with essential fixtures, ensuring a move - in ready living space.

AMENITIES GREEN AREA



Suite 15

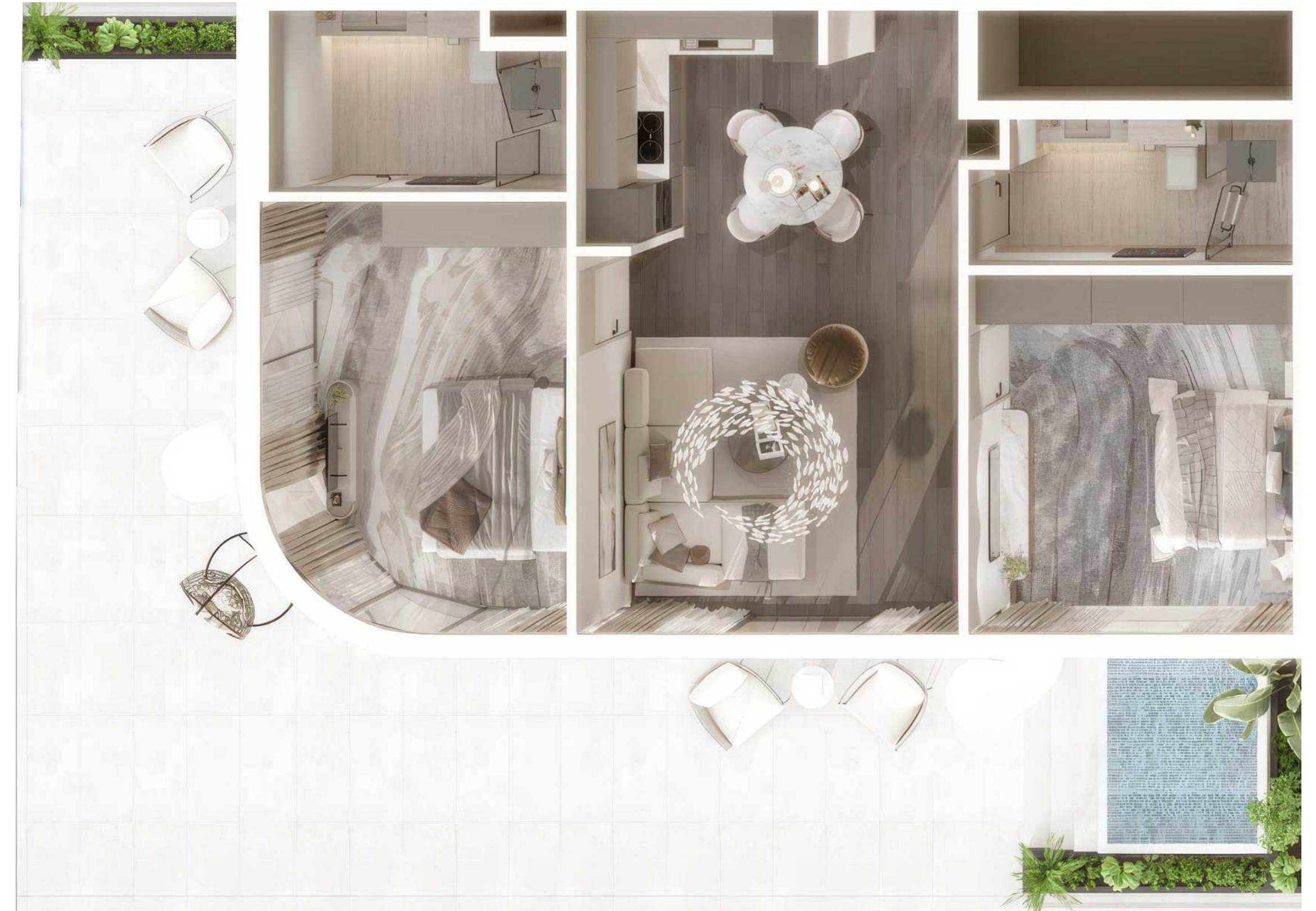
PROPERTY DETAILS & SIZING DETAILS

∞ Mr. Eight
Development

| | |
|------------------|----------------------|
| PROJECT TYPE: | Residential |
| UNIT TYPE: | 2 Bedroom |
| NR. OF PARKING: | 1 |
| POOL IN TERRACE: | Yes |
| SUITE AREA: | 833 sq.ft/ 78 sq.m |
| BALCONY AREA: | 545 sq.ft/ 51 sq.m |
| TOTAL AREA: | 1378 sq.ft/ 128 sq.m |
| FURNISHED: | |

This apartment is offered for sale with built - in furniture, spacious wardrobes, and a kitchen equipped with high - quality German appliances. The bathrooms come fully fitted with essential fixtures, ensuring a move - in ready living space.

BLUE WATERS



BLUE WATERS

Suite 16

PROPERTY DETAILS & SIZING DETAILS

∞ Mr. Eight
Development

| | |
|------------------|----------------------|
| PROJECT TYPE: | Residential |
| UNIT TYPE: | 2 Bedroom |
| NR. OF PARKING: | 1 |
| POOL IN TERRACE: | Yes |
| SUITE AREA: | 825 sq.ft/ 77 sq.m |
| BALCONY AREA: | 386 sq.ft/ 36 sq.m |
| TOTAL AREA: | 1212 sq.ft/ 113 sq.m |
| FURNISHED: | |

This apartment is offered for sale with built - in furniture, spacious wardrobes, and a kitchen equipped with high - quality German appliances. The bathrooms come fully fitted with essential fixtures, ensuring a move - in ready living space.



THE PALM JEBEL ALI

Suite 17

PROPERTY DETAILS & SIZING DETAILS

∞ Mr. Eight
Development

| | |
|------------------|----------------------|
| PROJECT TYPE: | Residential |
| UNIT TYPE: | 2 Bedroom |
| NR. OF PARKING: | 1 |
| POOL IN TERRACE: | Yes |
| SUITE AREA: | 833 sq.ft/ 78 sq.m |
| BALCONY AREA: | 548 sq.ft/ 51 sq.m |
| TOTAL AREA: | 1381 sq.ft/ 128 sq.m |
| FURNISHED: | |

This apartment is offered for sale with built - in furniture, spacious wardrobes, and a kitchen equipped with high - quality German appliances. The bathrooms come fully fitted with essential fixtures, ensuring a move - in ready living space.

JUMEIRAH GOLF & COUNTRY CLUB



THE PALM JEBEL ALI

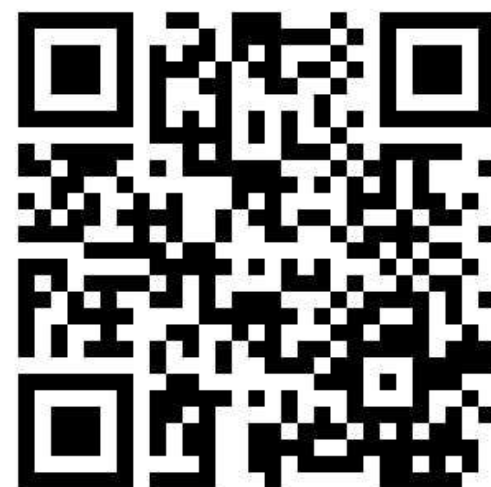
PLANS AND BROCHURE VIA MESSENGERS

— **∞ Mr. Eight** —

Development



TELEGRAM



WHATSAPP



VIDEO

All information in the messengers is linked to our CRM system, ensuring that the list of available apartments is constantly updated in real time. Brochures, project materials, and pricing are accessible via Telegram and WhatsApp, with the option to generate a commercial offer.

Videos are also available on our YouTube channel.

— ∞ Mr. Eight —
Development

12

YEARS

3

PROJECTS AREA

16

PROJECTS

Has completed around 16 projects over the past 12 years across Europe. Known for creating conceptual boutique projects, the company combines innovation and functionality to deliver unique living spaces tailored to modern family needs. With a commitment to quality and creativity, Mr. Eight Development continues to shape the future of residential development. Now, with a strong focus on Dubai, the company is bringing its expertise and visionary approach to one of the world's most dynamic real estate markets.

www.mr8.ae

INTERSTELLAR TOWER

∞ Mr. Eight

Family Office | Sales Center
EMAAR Business Park Building 4
Office 612, Dubai

All Rights Reserved by Mr. Eight Development

www.interstellartower.com

∞ Mr. Eight
Development